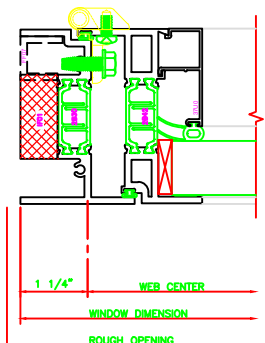


430 JAMB
325 CASEMENT IN 4-BAR ARMS

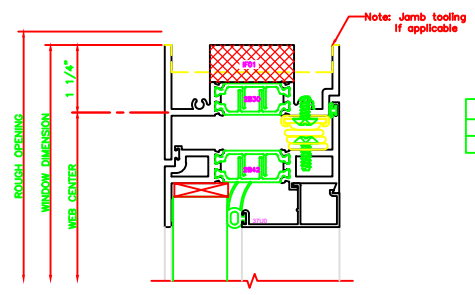
431 JAMB
325 CASEMENT IN C&W LOCK

ERECTOR NOTE:
THE HINGED JAMB FRAME SHALL BE INSTALLED PLUMB. ALL HINGES SHALL BE SECURELY BLOKED AND ANCHORED TO THE CONDITION THROUGH THE HINGES OR AS CLOSE AS POSSIBLE TO THE HINGES.

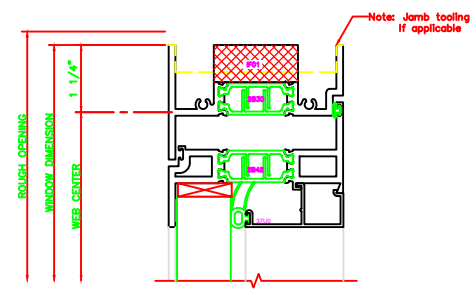


432 JAMB
325 CASEMENT IN BUTT HINGES

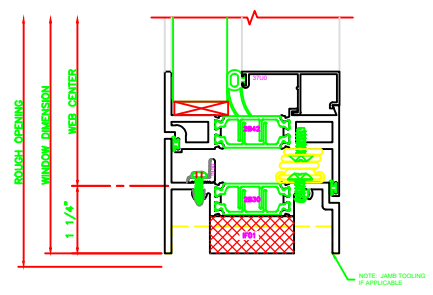
130 HEAD
325 CASEMENT IN 4-BAR ARM



131 HEAD
325 CASEMENT IN BUTT HINGES



230 SILL
325 CASEMENT IN 4-BAR ARMS



231 SILL
325 CASEMENT IN BUTT HINGES

